



PROJECT PROFILE

NIH EDMOND J. SAFRA FAMILY LODGE
CENTER DRIVE BETWEEN OLD GEORGETOWN ROAD AND CONVENT DRIVE
BETHSDA, MD

Overview (from the NIH website):

The Edmond J. Safra Family Lodge at NIH offers a home-like place of respite for families and loved ones of adult patients who are receiving care at the [NIH Clinical Center](#), the nation's premier clinical research hospital. Patients from across the nation and throughout the world visit NIH to participate as partners in medical discovery. Often they are experiencing serious illness and undergoing intensive medical treatments. It's important and necessary for patient families and loved ones to be nearby during these difficult and often stressful times. The Safra Family Lodge provides a home away from home by

providing space for solitude, family meetings and supportive fellowship.

The facility includes 34 guest rooms (most have two double beds), a library, a generously-equipped business and telecommuting center, a fitness center, a home-style kitchen, and comfortable social areas. There are two fully-equipped laundry rooms for guests to use.

Just steps away from the [NIH Clinical Center](#), the Safra Family Lodge was designed as an early 1900 English Arts and Crafts manor. Surrounding gardens offer a spacious patio, quiet walking paths and serene seating areas.



“At the Edmond J. Safra Family Lodge at the National Institutes of Health, Ludowici clay tile is used on both the roof and the wall so that the eye is led from the peak of the roof down the building to the Healing Garden at the building’s base. The subtle shade range of the tile harmonizes with the textured stone wall below to unify the building’s façade.”
Amy Weinstein, FAIA

The “subtle shade range” is created using Ludowici Classic tile in natural clay red with Ebony Mist applied in light to medium range. The installer selects and blends these tiles to achieve the desired blend.



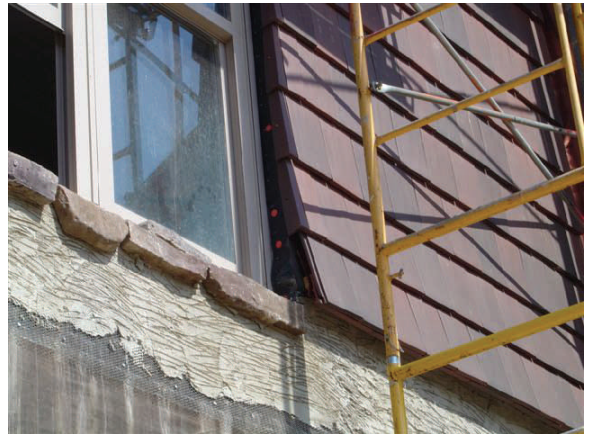
THOMCO, Inc

314 E. Main Street · Suite 401 · Newark, DE 19711

Phone: 800-334-0227 · Fax: 302-454-7592 · E-mail: info@thomco1.com



Under construction. The interlocking tiles are installed working from the left to the right.



Detached Gable Rakes were used to create a clean finished look at the window jambs. Note the flared detail as the tile terminates where the stone will begin.



The clean look at the windows is finished with copper headers and trim at the jambs.



Graceful lines at this covered porch area are created by a curved roof accommodated by the Classic Interlocking tile.



View from the entry and covered Porte cochere. If you look very closely you will see the custom Ludowici Terminal with ball on top as the finishing touch.